

Welcome

---

Bishopstoke Road, Eastleigh Bus Priority Improvement Scheme

Transforming Cities Fund

---

# Bishopstoke Road Bus Priority Improvements

## 2. Scheme Overview and Funding

### Scheme overview & Aims

This scheme will deliver junction improvements for all users (including pedestrians and cyclists) at Riverside and Chicken Hall Lane and offer a length of bus only lane between the two junctions (for westbound buses only). It will also provide improved bus stops for waiting passengers including real-time information facilities and enhanced bus stops/shelters (exact locations and facilities to be confirmed) in addition to improved facilities for pedestrians and cyclists travelling on Bishopstoke Road. The Bishopstoke corridor is a key section of existing bus routes route accessing the centre of Eastleigh for local communities immediately to the east and which travel onwards to and from Southampton.

The key aims of the scheme are:

- ✓ Improve the reliability and journey times of public transport, namely the bus for those travelling between Southampton and Eastleigh.
- ✓ To encourage people to catch the bus, walk or cycle as their first choice of local travel by providing a better connected, safe, and serviceable network for the people in the area, supporting economic growth and helping to improve the local and regional economy.

### Funding

In March 2020, Hampshire County Council welcomed news of the successful outcome of funding bids to the Department for Transport (DfT). Made jointly with Southampton City Council, Hampshire County Council made a bid for investment designed to improve walking, cycling and public transport within the Southampton City Region. The Department for Transport awarded £57 million to the Southampton City Region from the Transforming Cities Fund (TCF). The funding will be used to better connect Eastleigh, Bursledon and The Waterside/Totton to Southampton City Centre.

# Bishopstoke Road Bus Priority Improvements

## 3. Wider Transforming Cities Fund Programme

Waterside / Totton to Southampton	
1	<b>Redbridge Viaduct</b> – increasing the height of the bridge parapets to the desired height, offering increased protection for cyclists.
2	<b>Eling to Holbury cycle route</b> – the development of a continuous cycle route from Eling to Holbury. The route is a mix of on and off road, segregated and shared, maximising the opportunities and funding available. The route aims to link to the existing settlements along the Waterside together, creating a legible and cohesive network of routes.
3	<b>Rushington Rbt</b> – bus priority. Adding traffic signals and additional capacity to the roundabout to speed up the bus at this congested location.
4	<b>Marchwood bypass</b> – bus priority. A bus only right turn from the A326 onto Marchwood bypass, joining with Rushington Roundabout to reduce journey length and therefore speed up journey times.
5	<b>Junction Rd, Totton</b> – bus only link in both directions to reduce journey length and speed up journey times. Location of a 'super' stop for bus passengers on Commercial Road.
6	<b>Improved bus stops with real time information.</b> Super and enhanced stops are proposed along the corridors to improve passengers' experience, waiting facilities and information supplied. Potentially the opportunity for micro consolidation, e-bikes, retail lockers/offers.
Eastleigh to Southampton	
1	<b>Eastleigh Town Centre cycle route (from Southampton Parkway to Eastleigh Town Centre).</b> Modal filters, signage and crossing facilities to provide a cycle route from Southampton Parkway to Eastleigh Town Centre.
2	<b>Bishopstoke Rd, Eastleigh (western end)</b> – bus priority. The provision of bus lane, signal priority from Riverside Junction to Chickenhall Lane Junction.
3	<b>Airport Parkway travel hub</b> – the provision of travel information and interchange at the Airport Parkway site to ensure integration between modes and improve journey efficiency and journey planning.
4	<b>Eastleigh Mobility Hub</b> – a Local Mobility Hub (LMH) will be a single place where a range of mobility options, services and facilities are available in a convenient location. They provide the opportunity for people who do not have access to their own car or only have access to one vehicle. They can also be used by those that want to make cleaner trips using an electric vehicle, bike or cargo bike for work, business or leisure.
5	<b>Improved bus stops with real time information.</b> Super and enhanced stops are proposed along the corridors to improve passengers' experience, waiting facilities and information supplied. Potentially the opportunity for micro consolidation, e-bikes, retail lockers/offers.
Bursledon to Southampton	
1	<b>Bursledon Road cycle link</b> – improving existing provision for cyclists and enabling connectivity and joining up routes within the developing cycling network.
2	<b>A27 Providence Hill cycle link</b> – improving existing provision for cyclists and enabling connectivity and joining up routes within the developing cycling network.
3	<b>Improved bus stops with real time information.</b> Super and enhanced stops are proposed along the corridors to improve passengers' experience, waiting facilities and information supplied. Potentially the opportunity for micro consolidation, e-bikes, retail lockers/offers.



# Bishopstoke Road Bus Priority Improvements

## 4. Climate Change

### Hampshire's Climate Change targets

Hampshire County Council declared a Climate Emergency in June 2019.

Two targets have been set for the County Council, and these also apply to Hampshire as a whole:

**2050**  
Carbon neutral

**2°C**  
preparing to be resilient to the  
impacts of temperature rise.

We have set a pathway for how much carbon we need to reduce in order to be carbon neutral by 2050. Addressing carbon reduction and climate change resilience together, shows our critical role in ensuring that we continue to deliver our services, whilst making sure that our environment, infrastructure and communities are prepared too.

### Climate Change Strategy

Since declaring a climate emergency, our climate change strategy recognises the changing climate as the biggest threat.

Our vision for a well-adapted and resilient Hampshire will be essential to ensure that Hampshire's economy, environment, and society continues to thrive and prosper.

Our policy is to focus on embedding climate resilience and mitigation across key policies and sectors, working with communities across Hampshire.

A full Climate Change Impact Assessment will be undertaken for this scheme following the completion of Detailed Design.

# Bishopstoke Road Bus Priority Improvements

## 5. Scheme Overview Plan

Existing Chicken Hall Lane roundabout to be upgraded to traffic signal-controlled junction with crossing facilities for cyclists and pedestrians.

New signalised crossing on the eastern side of The Hub sports and recreation ground to improve crossing facilities for pedestrians and cyclists by replacing the existing crossing refuge and a new 2m footway on Northern side of Bishopstoke Road.

Options to deliver enhanced bus stop at either Spring Lane or Alen Drayton Way.

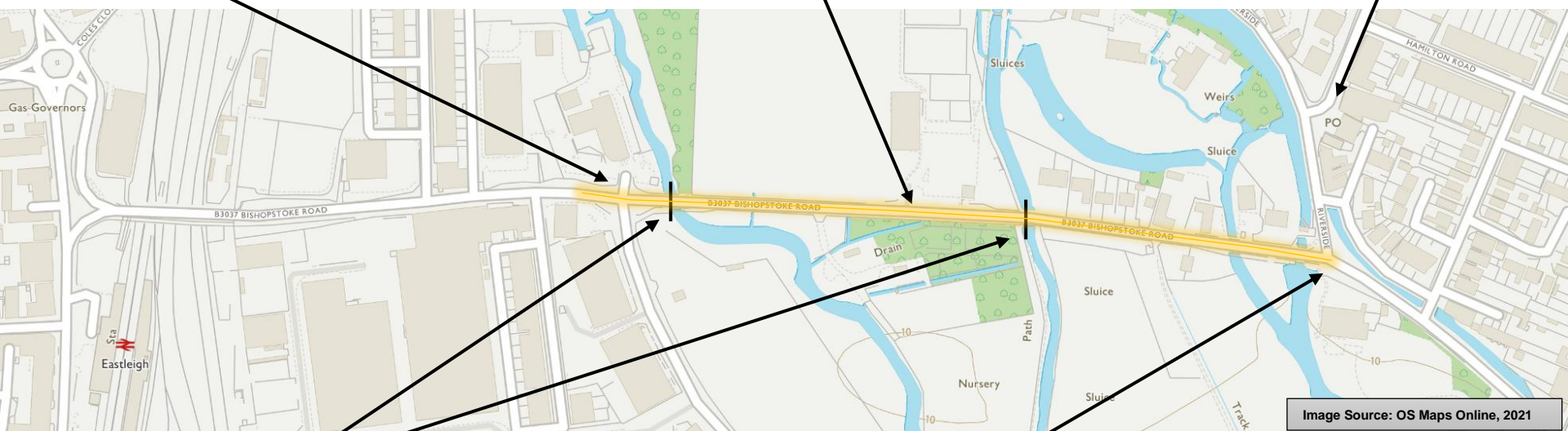


Image Source: OS Maps Online, 2021

Provision of a new westbound bus lane between the River Itchen bridges (in front of The Hub) to enable buses to bypass queueing traffic on Bishopstoke Road.

The signalisation of Bishopstoke Road/Fair Oak Road/Riverside junction including a signalised pedestrian crossing on Riverside and relocated signalised crossing for pedestrians and cyclists on Bishopstoke Road/Fair Oak Road.

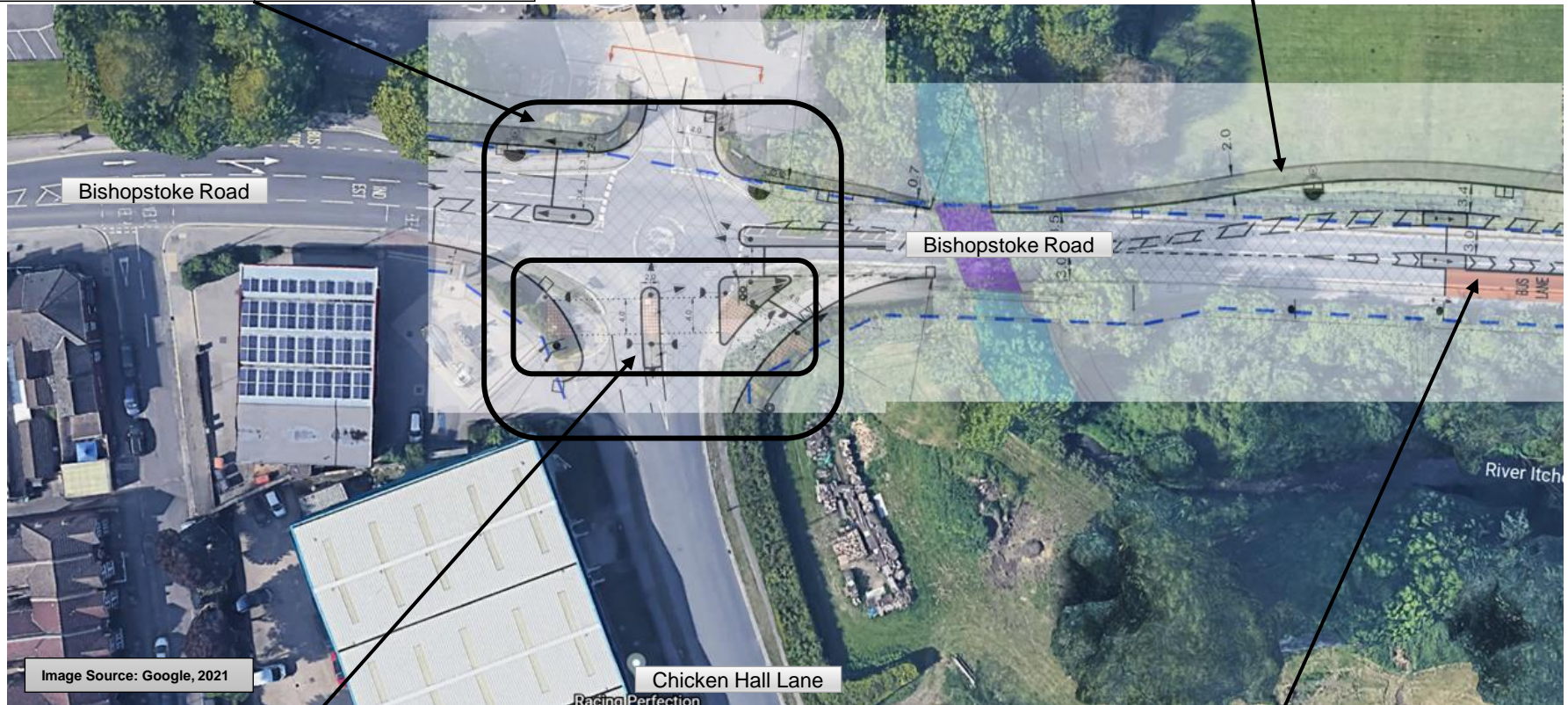


# Bishopstoke Road Bus Priority Improvements

## 6. Bishopstoke Road/Chicken Hall Lane Junction

Existing roundabout to be upgraded to a signal controlled junction.

New pedestrian footway on northern side of Bishopstoke Road.



New signalised crossing on Chicken Hall Lane for pedestrians and cyclists.

End of westbound bus lane on Bishopstoke Road with a signal controlled merge for buses and general traffic.

# Bishopstoke Road Bus Priority Improvements

## 9. Bishopstoke Road

New pedestrian footway on northern side of Bishopstoke Road which requires the removal of the existing trees and hedgerow and replacement with species more appropriate to the local environment resulting in a net gain in ecological and environmental benefit.

New signalised crossing on the eastern side of The Hub improving the crossing facilities for pedestrians and cyclists.



Image Source: Google, 2021

End of westbound bus lane on Bishopstoke Road with a signal controlled merge for buses and general traffic.

Start of westbound bus lane on Bishopstoke Road (please note that finished surface of bus lane will not be red in colour).

Removal of bus layby.



# Bishopstoke Road Bus Priority Improvements

## 7. Bishopstoke Road/Riverside Junction

New signalised crossing on Riverside.

Riverside

Riverside arm of proposed signalised junction becomes "right turn only" (no left turn to Fair Oak Road).

Formal Traffic Regulation Orders ("TROs") are required to restrict movements from Riverside and Fair Oak Road. The TRO process involves giving local people an opportunity to give their views separate to this public engagement.

Bishopstoke Road

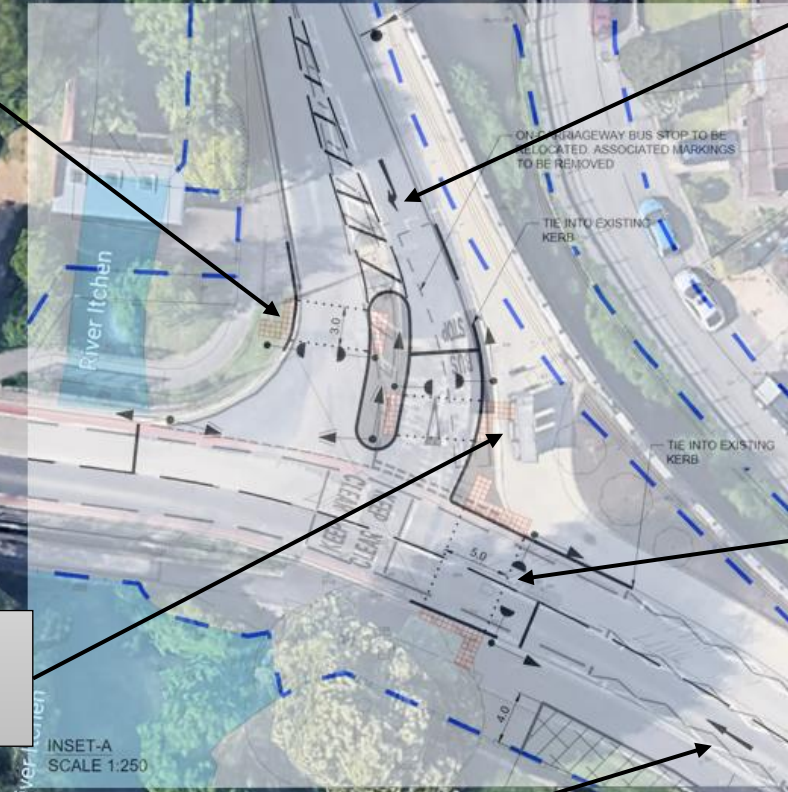
Existing bus stop likely to be relocated to Spring Lane and enhanced.

Existing signalised crossing on Fair Oak Road relocated closer to Riverside.

Fair Oak Road arm of proposed signalised junction becomes "ahead only" (no right turn to Riverside).

Fair Oak Road

Image Source: Google, 2021





# Bishopstoke Road Bus Priority Improvements

## 8. Bishopstoke Road/The Hub Artist Impression



# Bishopstoke Road Bus Priority Improvements

## 9. Ecological/Environmental Considerations



The scheme involves the removal of existing trees and hedge on the northern side of Bishopstoke Road, adjacent to The Hub/ rugby pitches. The trees and hedge will be replaced with species more suitable for a flood plain environment which will enhance the local environment. This scheme has been developed with support from HCC Arboriculture Team.



Given the proximity of the scheme to the River Itchen, special approvals will be required from the Environment Agency which will be secured prior to construction. Special measures will be taken to ensure that the scheme will not impact on the river during construction and operation.



The scheme involves work within an existing flood plain – a full assessment of the scheme with respect to impacting on the flood plain capacity will be undertaken and review as part of the decision making process.



Any ecologically valuable scrub, hedge and mature trees, adjacent to the scheme, will be retained and protected during onsite works.

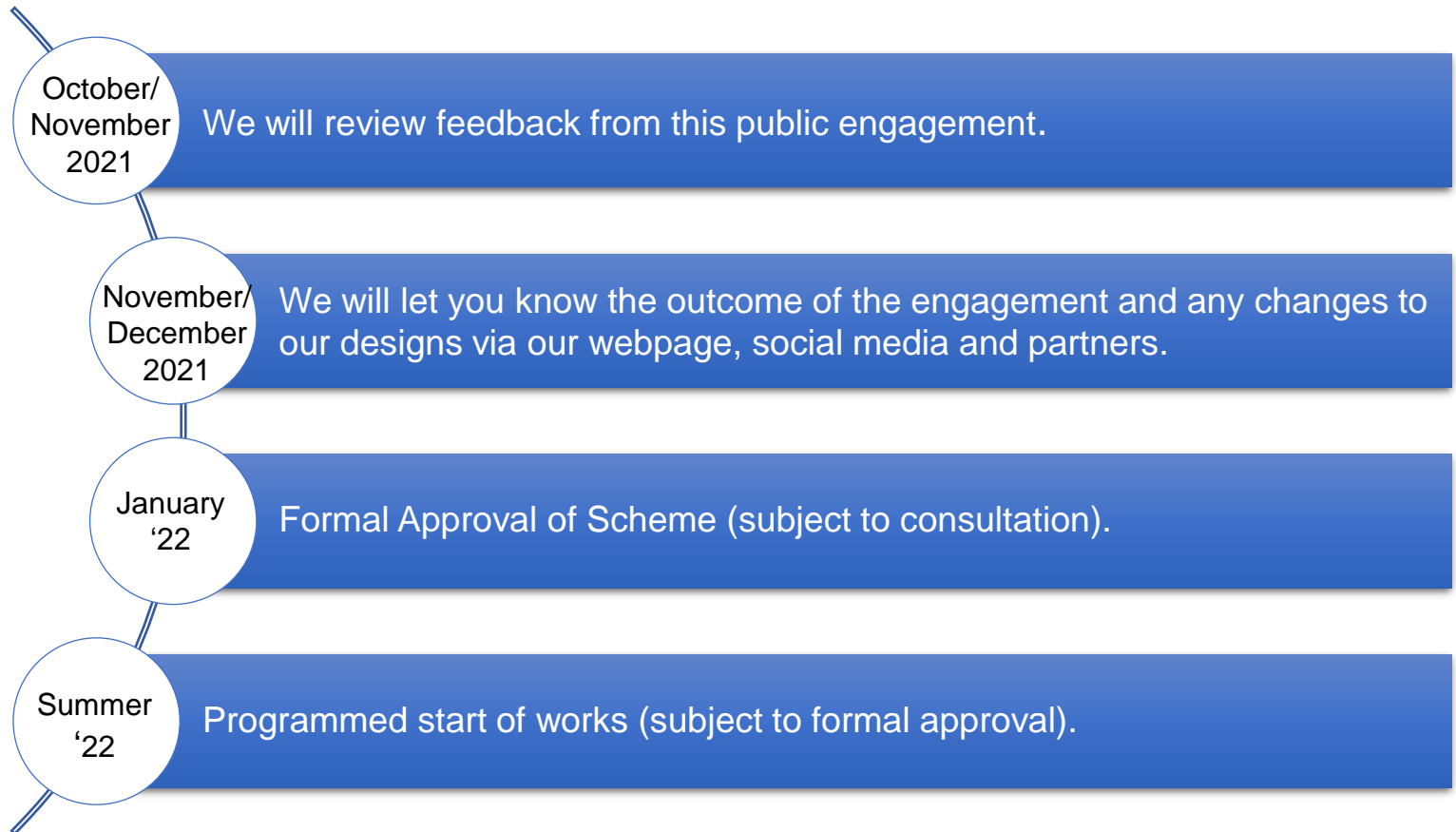


Increasing the number of people choosing to travel via public transport, on foot or by bike for local journeys will support the County Council's Climate Change Strategy by reducing congestion, improving air quality, improving health and economic growth.

# Bishopstoke Road Bus Priority Improvements

## 10. Your Feedback and Next Steps

What  
happens  
next?





# Bishopstoke Road Bus Priority Improvements

## 11. Have your Say

The survey will be open from noon 24<sup>th</sup> September 2021  
and  
closes just before midnight on 22<sup>nd</sup> October 2021

[Please click on this link to access the survey.](#)

### Contact Us

**Email:** [implementation@hants.gov.uk](mailto:implementation@hants.gov.uk)

**Post:** Strategic Transport,  
Hampshire County Council,  
The Castle,  
Winchester SO23 8UD

**Telephone:** 0300 555 1388